

71 *The Plaza* 1st Floor

parkwest.ie

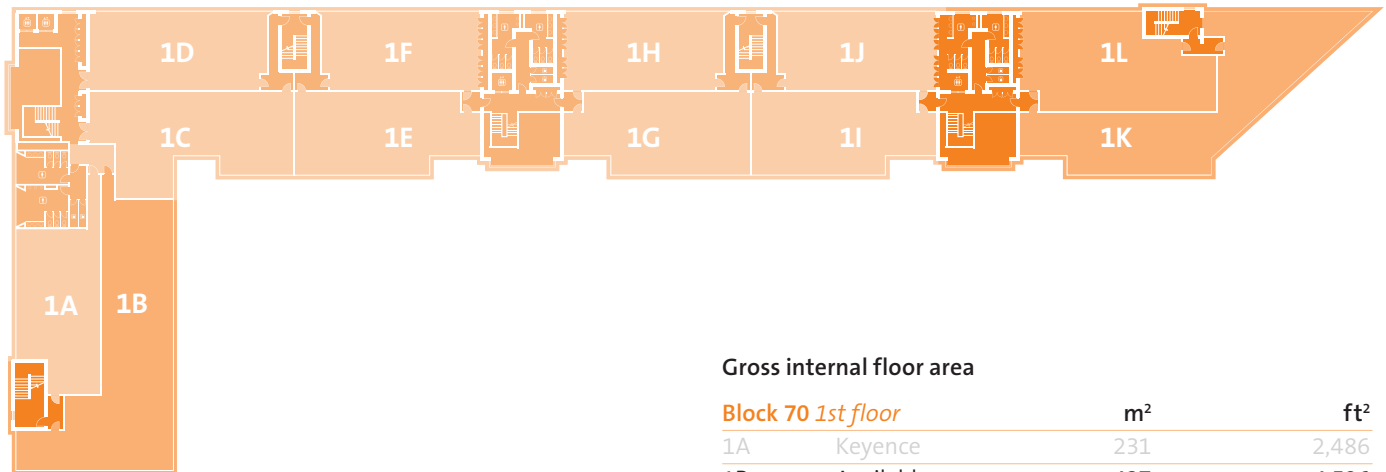
Suites from 2,895ft² (269m²)

**park
west**
Business Park



BER B3 D2

71 The Plaza 1st Floor



Accommodation

Suites from 2,895ft² (269m²)

Specification

Raised access floors (floor voids 100mm)
 Suspended ceilings (ceiling voids 350mm clear)
 Usable floor-to-ceiling height 2.7m (9ft)
 Entrance foyer floor-to-ceiling height 13m (40ft)
 Category 2 lighting
 VRV air-conditioning
 Multi-duct telecoms
 8-person passenger lifts
 Ample car parking

BER Details 71 1B

BER D2
 BER No.800144461
 Energy Performance Indicator: 532.56 kWh/m²/yr

BER Details 71 1K

BER B3
 BER No.800015133
 Energy Performance Indicator: 317.39 kWh/m²/yr

BER Details 71 1L

BER B3
 BER No.800015141
 Energy Performance Indicator: 258.07 kWh/m²/yr

Transport

Located by M50/N7 only 20 minutes to Dublin Airport and 20 minutes to City Centre and Grand Canal Dock by on-site train. Additional connections with Luas Red Line and Dublin Bus.

Gross internal floor area

Block 70 1st floor		m ²	ft ²
1A	Keyence	231	2,486
1B	Available	427	4,596
1C	Sysnet	275	2,958
1D	Sysnet	227	2,441
1E	Heavey RF	236	2,551
1F	Heavey RF	202	2,178
1G	Heavey RF	237	2,551
1H	Creditsafe	202	2,174
1I	Pigsback.com	237	2,551
1J	EuRGI	202	2,174
1K	Available	398	4,285
1L	Available	269	2,895
Total		1,094	11,776



Agents

CBRE

Mark Smyth
 & Alex Fahey
 T: +353 1 618 5500
 PSRA 001528

Knight Frank

David Reddy
 T: +353 1 634 2466
 PSRA 001880

CUSHMAN & WAKEFIELD
COMMERCIAL PARTNER OF SHERRY FITZGERALD

David Bennett
 T: +353 1 639 9374
 PSRA 002222

Developer

HARCOURT DEVELOPMENTS

harcourtdevelopments.com
 T: 01 475 3928

park west
 Business Park

parkwest.ie
 T: 01 475 3928

Disclaimer: CBRE, Knight Frank and Cushman & Wakefield for themselves and for the vendors or lessors of this property whose agents they are give notice that: (i) The particulars are set out as a general outline for the guidance of intending purchasers or lessees, and do not constitute part of, an offer or contract; (ii) All description, dimensions, references to condition and necessary permission for use and occupation and other details are given in good faith and are believed to be correct, but any intending purchasers or tenants should not rely on them as statements or representations of fact but must satisfy themselves by inspection or otherwise as to the correctness of each of them; (iii) No person in the employment of CBRE, Knight Frank and Cushman & Wakefield has any authority to make or give any representation or warranty whatsoever in relation to the property.